

**ALIGN CONSULTING ENGINEERS P vt. Ltd.**

**ABSOLUTE AVENUES**

## **COMPANY OVERVIEW**

**ALIGN** Consulting Engineers Pvt. Ltd is a professional services organization providing specialized and sustainable technology solutions in the fields of Environmental Management, Geographic Information System and Information Technology. Founded by an efficient, dynamic and committed team of professionals.

## **COMPANY OBJECTIVE**

The objective of the company is to focus on Environmental Management, GIS (Geographic Information system), and IT (Information Technology) related services to meet the specific customized needs of clients, various government and private industrial Sectors.

## **OUR MISSION**

To help our clients to provide sustainable technology solutions for “Development of environment conservation, resource planning and improve global environmental conditions”

## **OUR VISION**

To become a Leading Independent Consultancy that provides sustainable, environment friendly, economically feasible solutions with quality and integrity.

[illegible]

- ## Upcoming Vertical

- IT (Information Technology)



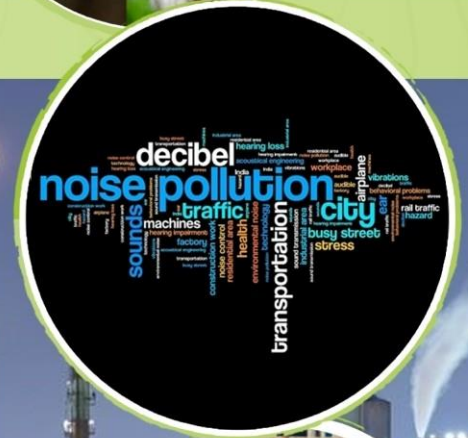
# Our Services Overview

## Environmental Management



- Environmental Due Diligence
- Biodiversity Assessment
- Disaster Management & Risk Assessment
- Climate Science Study
- Social Impact assessment
- Wetland Bio-Remediation
- Ecological Restoration

# Environmental Impact Assessment



**ALIGN** Consulting Engineers is in the forefront of the consulting firms that work on Environmental Impact Assessments, and Strategic Environmental Impact Assessments (SEIA). The main activities related to EIA are in the field of National Highways, Expressways, Rail, Metallurgy industries (ferrous and non-ferrous), geothermal power plants, and infrastructure. The emphasis is to find solutions that reduce or Compensate for the potential impacts of construction, both in Construction phases and operational phases.

We provide below Services:

- Strategic Environmental Impact Assessment for Developmental Planning
- Site Selection Studies for Industrial /urban sectors
- Environmental Impact Assessment
- Environmental Monitoring
- Environmental Modeling
- Development of Environment Management Plan
- Supervisory and Technical Support



# Sectors We Serve



- Highways
- Railways
- Ports
- Mining of Minerals
- Thermal Power Plants
- Coal Washeries
- Mineral Beneficiation
- Metallurgical Industries (Ferrous & Non-Ferrous)
- Cement Plants
- Chemical Fertilizers
- Pharmaceuticals
- Petro-Chemical Complexes
- Synthetic Organic Chemical Industries
- Building and Construction Projects
- Industrial Estates/Parks/Complexes/ Areas/Export Processing Zones (EPZs)/Special Economic Zones (SEZs)/Biotech Parks/Leather Complexes

**ALIGN** Consulting Engineers serves above sectors under the collaboration with QCI and NABET Accredited bod

# Environment, Health and Safety



**ALIGN** EHS provides a variety of services to clients to help them verify that their activities and operations, as revealed through EHS audits, are in compliance with local regulatory requirements, internal corporate policies and procedures, and are appropriate and best applicable to EHS management standards.

- Environment Health and Safety Due Diligence
- EHS Audits as per the National and International standards / specifications (OHSAS 18001:2007, EMS 14001)
- Audit as per IS 14489:1998 and as per the requirements of the company / industry General EHS audit aiming improvement of the project site/industry
- Statutory audit for high-rise buildings as per the National Building Code (NBC)
- Designing of the Occupational Health and Safety manuals



# Sustainability Services



- Global Sustainability Strategy, Frameworks & Reporting
- ESG Framework, Planning and Implementation
- ESG Due Diligence
- Climate Risk Assessment & GHG Reporting
- Quantification of Water & Waste Foot Print
- Quantification of Carbon Footprint of the product and process
- Green audits



# Water and Wastewater Management



**ALIGN** Consulting Engineers Water & Wastewater management provide end-to-end solutions in water and wastewater treatment

- Analysis and design of Treatment Plant according to the Client's Requirement
  - Sewage Treatment Plant (STP)
  - Effluent Treatment Plant (ETP)
  - Water Treatment Plant (WTP)
- Site selection and feasibility study for Common Sewage Treatment Plant and Common Effluent Treatment Plant (CETP)
- Environmental Impact Assessment as per the prescribed guidelines.
- Environmental Management Plan
- Environment, Health & Safety (EHS) Manual
- Water Recycle & Reuse Management Planning
- Operation & Maintenance of Treatment plants

# Waste Management



**ALIGN** Waste Management assist your business by providing Integrated Waste Management Services.

- Feasibility and detailed project report for Integrated Solid Waste Management
- Solutions for the economically sustainable waste treatment & disposal facilities for commercial, residential, And industrial real estate.
- Characterization of solid waste, identification, quantification and assessment of suitable treatment options.
- Site Selection through Hydro-Geological investigation And Regulatory Assessment.
- Development of Waste Management Plan
- Health Care Waste Management Plan



# Statutory Clearances



Technical support for below mentioned Clearances;

- Environmental Clearance
- Forest Clearance
- Wild Life Clearance
- CRZ Clearance
- Tree Felling Clearance
- Annual and half yearly compliances of MoEFCC & SPCBs



# Project Management Consultancy (PMC) and Supervision of Construction Projects



The Team at **ALIGN** Consulting Engineers is experienced in working on World Bank, JICA, ADB etc funding projects ranging from State Highways, National Highways, to Expressways and Water Supply Projects.

- **ALIGN** Consulting Engineers serves for the World Bank, JICA, ADB etc funded Project Management Consultancy (PMC) and Supervision of Construction Projects.

# Research & Development Projects



We develop high quality Research & Development tools that deliver technical data, analytics and solutions in environmental restoration & remediation. We do R & D projects in the following areas;

- Environmental remediation
- Waste to Energy
- Solid waste Management
- Lake Conservation
- Waste water Treatment
- Ecological restoration
- Climate Change Modelling
- Contaminant Migration
- Wetland & River Conservation & Restoration
- Carbon Sequestration
- Remote Sensing & GIS,
- Conservation Biology

# Training



**ALIGN** Consulting Engineers Team designs and conducts training programs according to the requirement of government organizations and different private industrial sectors.

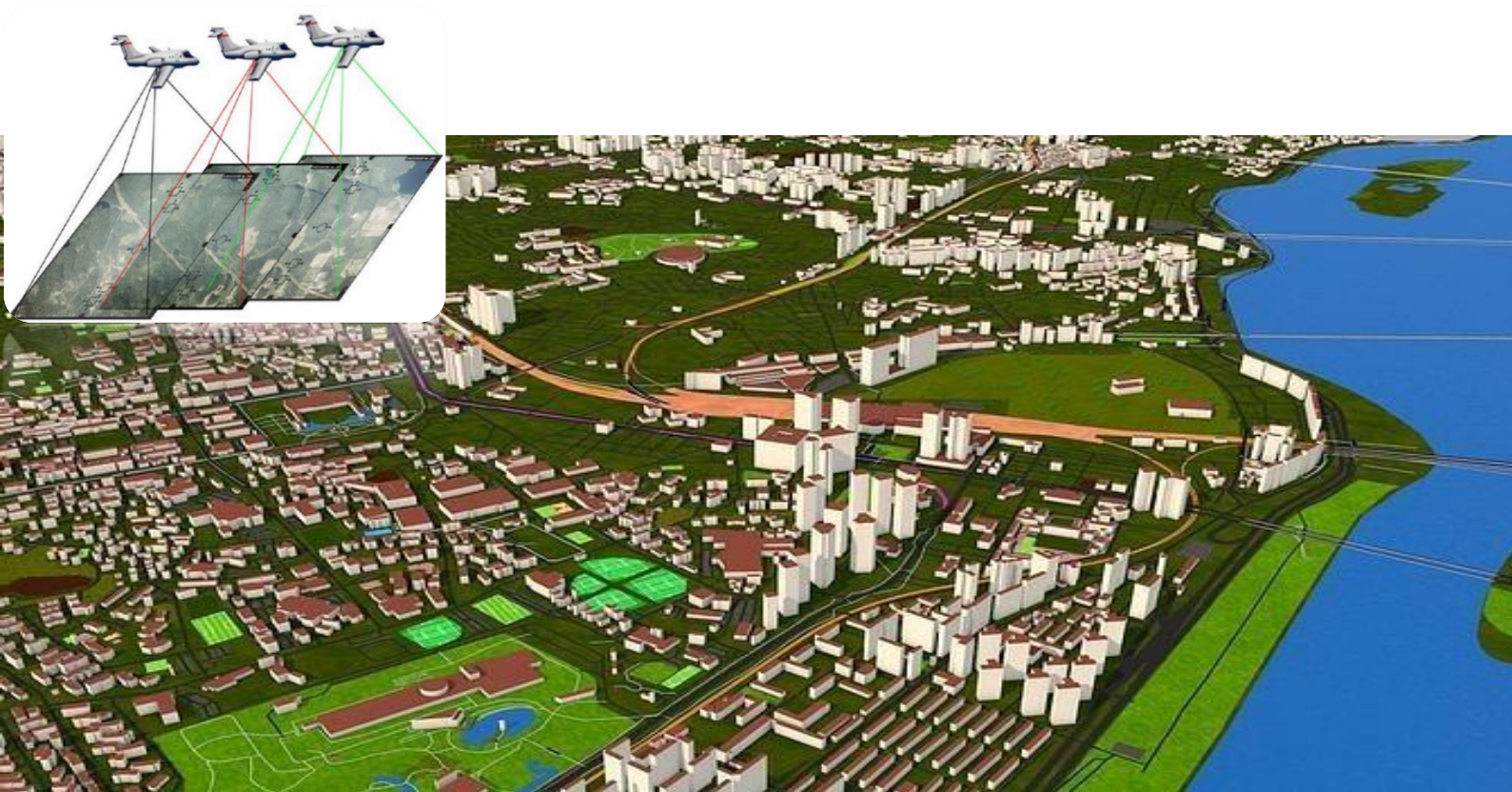
We offer Training Programs in the following areas:

- Environmental statutory Clearances,
- Solid Waste management,
- Environment, Health and Safety
- Remote Sensing and GIS
- Wastewater Treatment.

We provide in-house workshops and online training also.



# GIS (Geographic Information System)



- **Photogrammetric Services:** Aerial Triangulation, DTM / Planimetric Data Extraction, 3D City Modeling, Ortho-rectification.
- **LiDAR:** UAV / Airborne LiDAR data processing, Mobile LiDAR data processing and Terrestrial LiDAR data processing.
- **UAV Imagery Processing:** Post-processing of the UAV images to extract DTM and create True Ortho Photo Production.
- **Geographic Information System:** GIS Data Conversion, Geo-Database Design, GIS / Land Information Systems, GIS Application Development, Web Based GIS, Custom Applications, etc.
- **Surveying Services:** UAV Surveys, Topographic Surveys, Cadastral Surveys, Route Surveys, Utility Surveys and Control Surveys.
- **Location Based Services:** GPS/LBS products & services.



# Photogrammetric Services



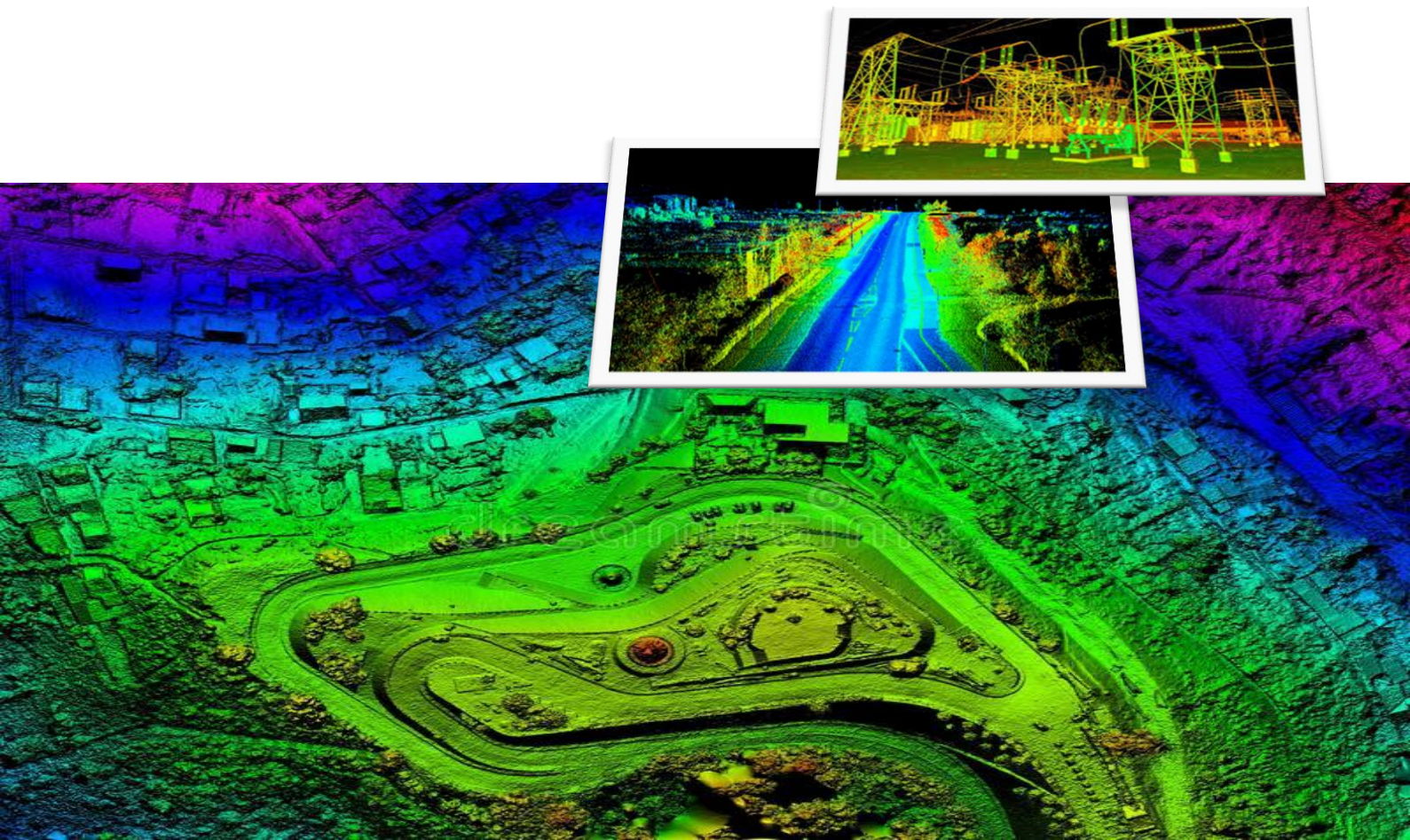
**ALIGN** has an experienced Photogrammetry team equipped with the latest digital Photogrammetry systems. ALIGN Offers comprehensive services in the field of Digital Photogrammetry to create 3D Data sets.

Our Services includes:

- Aerial Triangulation
- Digital Elevation Model (DEM)
- Planimetric Mapping
- Terrain Modelling
- Topographic Mapping
- Orthophoto Production
- 3D City Modelling



# LiDAR Data Processing & Mapping



- **Airborne Laser Terrain Mapping (ALTM)**

**ALIGN** have extensive experience in categorizing LiDAR point cloud data to different classes like Bare earth, Buildings, Bridges, Hydrography, Low & High Vegetations, Pylons, High tension wires & Cables, etc. We also do Flight Line adjustment, advanced as-built 3D Modelling and Planimetric Mapping.

- **Mobile / Handheld LiDAR**

- **UAV LiDAR**

**ALIGN** are capable of processing UAV LiDAR data from flight line adjustment to classification of point cloud data to its respective feature class and vectoring them creating 3D City Modelling



# UAV Imagery Processing



**ALIGN** does post-processing of high resolution UAV images, extract DTM and generate highly accurate/high resolution True Orthophoto.

**ALIGN** has the capabilities to produce Urban cover mapping using high-spatial resolution UAV imagery which is used for Urban Planning and development

# Geographical Information System



**ALIGN** is an Independent GIS System Integrator and focuses on end to end offerings in geospatial information services. Our offerings includes GIS Consultancy Services, GIS System Development & Implementation, off-the-rack Integration, Testing & Maintenance for various verticals, GIS Data Design & Modelling, Data Migration, Capture, Validation, Maintenance (including remote maintenance), customer application development, web-based GIS for internal project management & for external customers, Geodatabase design configuring RDBMS establishing a multiuser editing environment, Standalone and web/mobile GIS application development.

**ALIGN** offers **Geospatial services for Telecom, Electric, Water & Sewer, Waste water, Gas, Land base and all other Utility Domain**



# Surveying Services



**ALIGN** provide a variety of surveying services including wetland delineation, boundary, as- built, tree, topographic surveys, staking of roadway and drainage projects and providing finished floor elevation certificates for real estate closings. We provide surveying services for the development of both residential & commercial properties to engineering, architectural & residential design firms.

The Surveying & Mapping services offered by **ALIGN** using Total Stations, Auto levels, GPS, Laser Scanners, etc. are:

- Topographic Surveys
- Cadastral Surveys
- Route Surveys
- Utility Surveys
- Urban Planning/Property Surveys
- DGPS Control Surveys
- Engineering Surveys



# Location Based Services



**ALIGN** undertake Comprehensive Surveys to map accurate location of any site in the most remote areas and collect attribute data.

This data is processed to prepare digital data which is made a part of digital maps making them intelligent. Competition Data, Demographic Data, Traffic Data and other important data is appropriately merged to create a comprehensive database.

This database can be used for Spatial Gap Analysis, Asset Management, Logistics and Transportation, Franchise Outlets, Strategic Network Planning, Standardization

# ALIGN Certifications

## Certificate of Registration

This is to certify that Quality Management System of

**ALIGN CONSULTING ENGINEERS PVT. LTD.**

15 - 38, Laxmi Nagar Extension, Dammaiguda, Kisara Secunderabad,  
Hyderabad- 500083, Telangana, India

is in accordance with the requirements of the following standard

**ISO 9001:2015**  
(Quality Management System)

**SCOPE**

Environmental Consultancy Services  
Sustainability & ESG Services  
Remote Sensing & GIS Consultancy Services

Certificate Number : 030323019101

Initial Registration Date : 03-Mar-2023  
1<sup>st</sup> Surveillance Date : 03-Feb-2024  
2<sup>nd</sup> Surveillance Date : 03-Feb-2025  
Certificate Expiry Date : 02-Mar-2026

**To verify certificate, visit at :**  
[www.arscert.com](http://www.arscert.com)  
<https://uafaccreditation.org>  
<https://www.iafcertsearch.org/>

Issued by ARS Assessment Private Limited

*Abhishek*  
Managing Director

UAF Address : 400, North Center Dr, STE 202, Norfolk, VA 23502, United States of America :  
This certificate remains the property of ARS and must be returned to ARS on Cancellation or Suspension of the certificate. Validity of the certificate is subject to successful completion of surveillance audits. Further clarification regarding the scope of this certificate and the applicability of standards may be obtained by consulting the Organisation on info@arscert.com

## Certificate of Registration

This is to certify that Environmental Management System of

**ALIGN CONSULTING ENGINEERS PVT. LTD.**

15 - 38, Laxmi Nagar Extension, Dammaiguda, Kisara Secunderabad,  
Hyderabad- 500083, Telangana, India

is in accordance with the requirements of the following standard

**ISO 14001:2015**  
(Environmental Management System)

**SCOPE**

Environmental Consultancy Services  
Sustainability & ESG Services  
Remote Sensing & GIS Consultancy Services

Certificate Number : 030323029102

Initial Registration Date : 03-Mar-2023  
1<sup>st</sup> Surveillance Date : 03-Feb-2024  
2<sup>nd</sup> Surveillance Date : 03-Feb-2025  
Certificate Expiry Date : 02-Mar-2026

**To verify certificate, visit at :**  
[www.arscert.com](http://www.arscert.com)  
<https://uafaccreditation.org>  
<https://www.iafcertsearch.org/>

Issued by ARS Assessment Private Limited

*Abhishek*  
Managing Director

UAF Address : 400, North Center Dr, STE 202, Norfolk, VA 23502, United States of America :  
This certificate remains the property of ARS and must be returned to ARS on Cancellation or Suspension of the certificate. Validity of the certificate is subject to successful completion of surveillance audits. Further clarification regarding the scope of this certificate and the applicability of standards may be obtained by consulting the Organisation on info@arscert.com

## Quality Policy

**Align Consulting Engineers Pvt. Ltd.** is a comprehensive service provider for various Environmental consulting services related to Environmental Impact Assessment & Environmental Management Plan (EIA/EMP); Environmental Data Generation, Biodiversity Impact Assessment, Environmental & Waste Management Audits, Solid Waste Management, Remote sensing & GIS, Environmental & Social Due Diligence, Sustainability Reporting, ESG framework and Implementation, Climate risk assessment and GHG reporting, Social Impact Assessment; Research and Development, Tailor made training programs for Academics and Industry and other consultancy services as per the Industrial requirements.



We support capacity development initiatives of NGOs, regional and national governments, businesses and other stakeholders through Consultation, Training, Advocacy, policy advisory and implementation services.

Our services cover both National and International customers, to meet their statutory, regulatory and non-regulatory requirements.

We ensure to meet the requirements of our clients, employees and other stakeholders to provide and sustain high quality services.

The company is committed for continual improvement in its quality performance.



 <p>भारत सरकार Government of India सूक्ष्म, लघु एवं मध्यम उद्यम मंत्रालय Ministry of Micro, Small and Medium Enterprises</p>	 <p>सूक्ष्म, लघु एवं मध्यम उद्यम MICRO, SMALL &amp; MEDIUM ENTERPRISES</p>
---	---

## UDYAM REGISTRATION CERTIFICATE

UDYAM REGISTRATION NUMBER

UDYAM-TS-02-0013623

NAME OF ENTERPRISE

M/S ALIGN CONSULTING ENGINEERS PRIVATE LIMITED

TYPE OF ENTERPRISE \*

S.No.	Classification Year	Enterprise Type	Classification Date
1	2021-22	Micro	16/05/2021
2	2020-21	Micro	05/01/2021

MAJOR ACTIVITY

SERVICES

SOCIAL CATEGORY OF ENTREPRENEUR

GENERAL

NAME OF UNIT(S)

S.No.	Name of Unit(s)
1	Align Consulting Engineers Private Limited

OFFICIAL ADDRESS OF ENTERPRISE

Flat/Door/Block No.	House No 15 38	Name of Premises/ Building	Laxmi Nagar Extension
Village/Town	Kisara	Block	Dammaiguda
Road/Street/Lane	Dammaiguda	City	Secunderabad
State	TELANGANA	District	HYDERABAD , Pin 500083
Mobile	9701194977	Email:	asmsultana786@gmail.com

DATE OF INCORPORATION /  
REGISTRATION OF ENTERPRISE

07/12/2020

DATE OF COMMENCEMENT OF  
PRODUCTION/BUSINESS

29/12/2020

NATIONAL INDUSTRY  
CLASSIFICATION CODE(S)

S.No.	NIC 2 Digit	NIC 4 Digit	NIC 5 Digit	Activity
1	74 - Other professional, scientific and technical activities	7490 - Other professional, scientific and technical activities n.e.c.	74909 - Other professional, scientific and technical activities n.e.c.	Services

DATE OF UDYAM REGISTRATION

05/01/2021

\* In case of graduation (upward/reverse) of status of an enterprise, the benefit of the Government Schemes will be availed as per the provisions of Notification No. S.O. 2119(E) dated 26.06.2020 issued by the M/o MSME.

Disclaimer: This is computer generated statement, no signature required. Printed from <https://udyamregistration.gov.in> & Date of printing:- 01/03/2023

For any assistance, you may contact:

1. District Industries Centre: HYDERABAD (TELANGANA)

2. MSME-DFO: HYDERABAD (TELANGANA)

Visit : [www.msme.gov.in](http://www.msme.gov.in) ; [www.dcsmse.gov.in](http://www.dcsmse.gov.in) ; [www.char](http://www.char)

Follow us @minmsme &amp; @msmecl



# ALIGN Prime Movers



Align Founding Team has a strong business agility. Our team strength lies in the quality and professionalism of the experts who work for the clients. Align team has the diversified experience in Design and Implementation of Major Infrastructure Projects like Indian Rail, Metro Rail, Dedicated Freight Corridor, Expressway, Highway, Road, Bridge. Align technical unit deals with the Project Management and Construction Supervision of Road, Highway, Bridge, Railways, Airport, Port, Municipal Solid Waste, Hazardous Waste, Sewage Treatment Plant, Water Treatment Plant, Watershed, Livelihood, Forestry, Water Transportation (Inland and Marine), Urban Infrastructure like Township and Building, Hydro Power and Power Transmission Projects. Our experts have a very good domain experience in Irrigation, Sewerage and Water Resources, Port, Airport, Surface Mining, Ecological Restoration (Terrestrial and Aquatic), Sustainable Farming, Bio-Diversity Management, Construction Waste Management, Wetland Bio-Remediation, Ecological Restoration (Terrestrial and Aquatic), Forest and Mangrove Restoration, Performance Assessment of STP, EIA, EMP, SIA, R&R, People Indigenous Development Plan, ESMF and ECOP, Green House Management, Trees Transplantation, Water and Soil Conservation of Lakes and Wetlands, Eco-Tourism, Fisheries, Aquatic Benthic Flora and Fauna Study, Livelihood and Disaster Management. Our team is well versed in handling the projects for funding agencies like Asian Development Bank, World Bank, Japan International Cooperation Agency, International Finance Corporation, KfW (Germany), AFD (France), etc. Our experts had an international experience in the infrastructure projects. Align team is capable of delivering the most challenging assignments with complete confidence for a successful outcome for our clients.

<b>M.Sultana</b> <b>Director</b> <b>M.Sc., M.Tech.</b> (Environmental Science and Engineering)	<b>sultana@alignconsulting-eng.com</b>
<b>Mahmad Raphiyoddin Shaphiyoddin Malik,</b> <b>Director (Environment)</b> <b>B.E., M.Tech.</b> (Environmental Science and Engineering)	<b>rafimalik@alignconsulting-eng.com</b>
<b>Debasish Majumder</b> <b>Head (Environment Management)</b> <b>M.Sc.(Tech.)</b> (Environmental Management)	<b>debasish@alignconsulting-eng.com</b>
<b>Dr. C. Aparna</b> <b>Head (Sustainability, R &amp; D)</b> <b>M.Sc., PhD</b> (Environmental Science and Technology)	<b>aparna@alignconsulting-eng.com</b>
<b>M.A.Fasi</b> <b>Head (Solid Waste Management)</b> <b>M.Sc.</b> (Environmental Science and Psychology)	<b>fasi@alignconsulting-eng.com</b>





**ALIGN CONSULTING ENGINEERS Pvt. Ltd.**

**ABSOLUTE AVENUES**

Address :

# 15-38, Laxmi Nagar Extension,  
Dammaiguda, Keesara,  
Secunderabad – 500083, Telangana.

Cell : 9701194977, 9177390560

Email : [info@alignconsulting-eng.com](mailto:info@alignconsulting-eng.com)

[www.alignconsulting-eng.com](http://www.alignconsulting-eng.com)

